

PART OF THE N.W. 1/4, SEC. 27 & N.E. 1/4, SEC. 28, T.6N., R.1W., S.L.B. & M.

ARLINGTON HEIGHTS ADDITION

BLOCKS 3 & 4 SEE PAGE 1

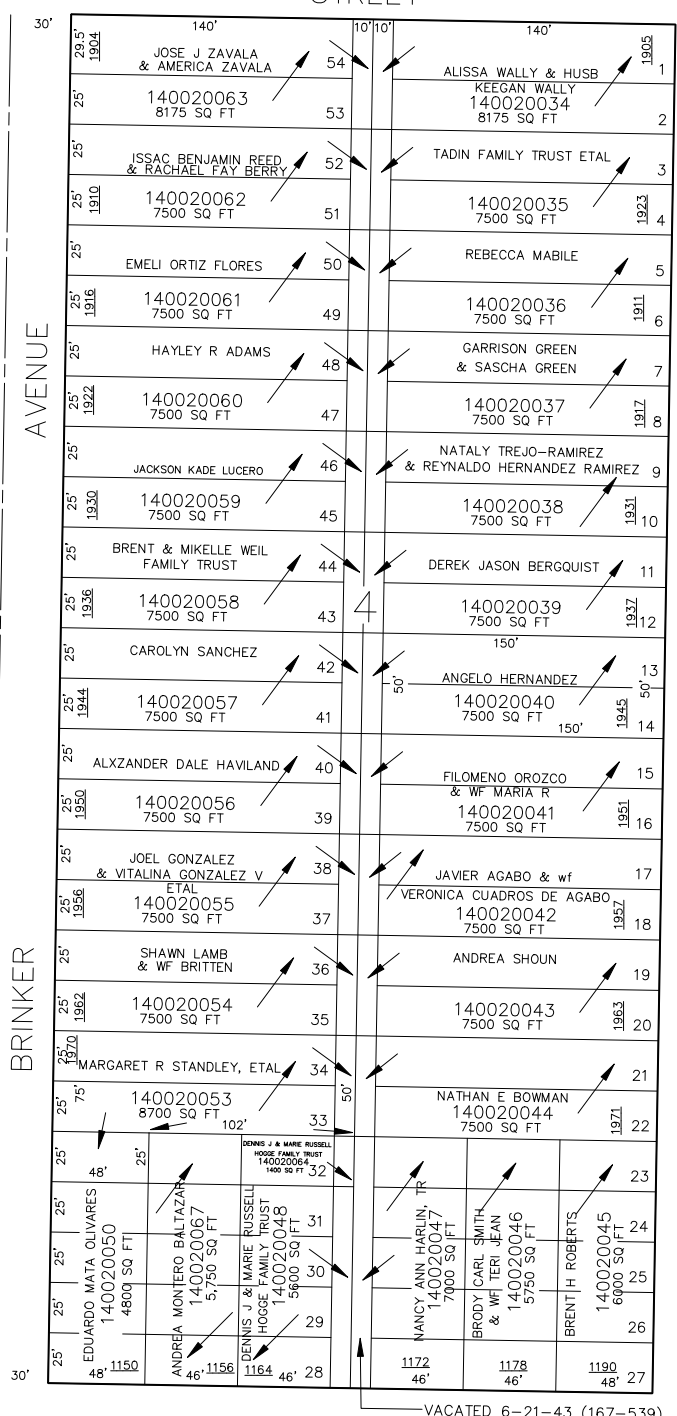
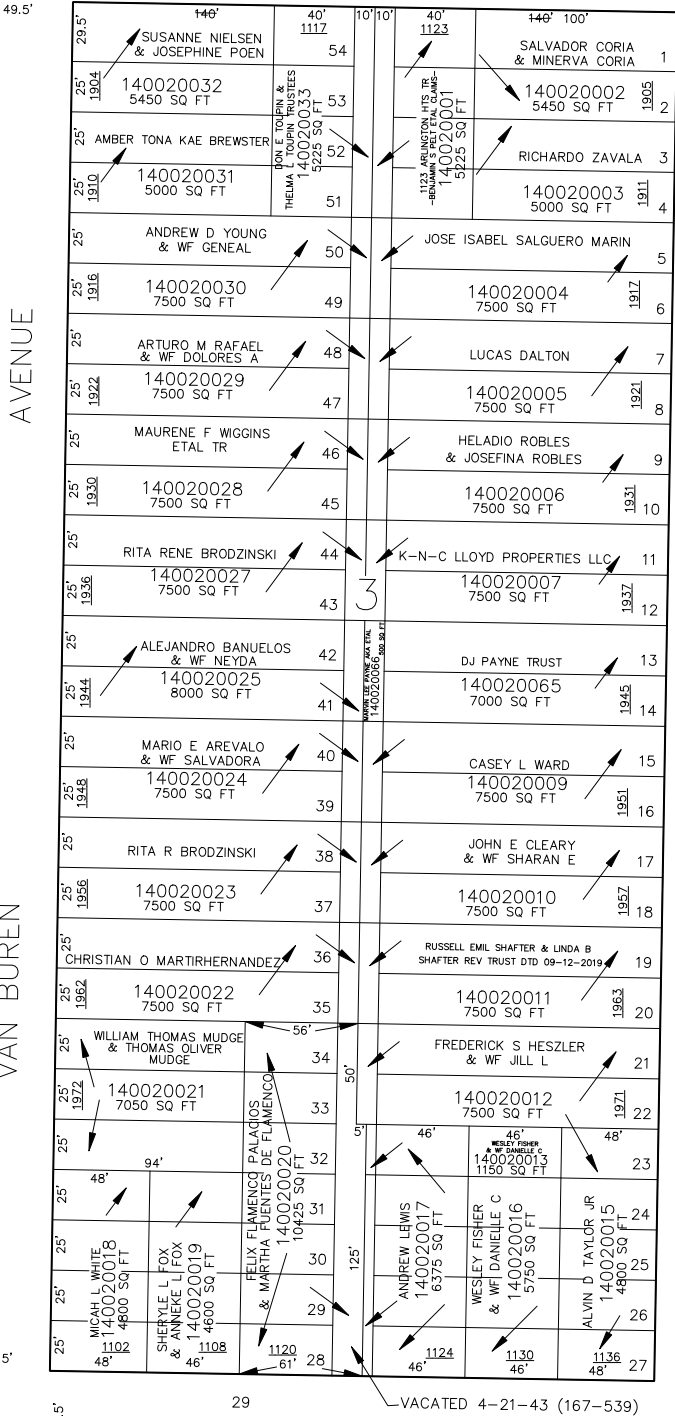
FOR COMPLETE ENG DATA SEE ORIGINAL DEDICATION PLAT IN BOOK 7, PAGE 38 OF RECORDS.

TAXING UNIT: 25

19TH

IN OGDEN CITY  
SCALE 1" = 50'

STREET



SEE PAGE 4

SEE PAGE 6

\*FOR TAX PURPOSES ONLY\*

SEE BOOK 13, PAGE 114

HARRISON

BLVD.

49.5'

49.5'